



**The Intifada In Figures**  
Statistics On Israel's Violations of Human Rights  
in the Occupied Palestinian Territories  
Gaza Strip  
28 September 2000 - 28 September 2003



- Table ( 1 ) Shows Palestinians Killed ( Gaza Strip ) : By Place of injury
- Table ( 2 ) Shows Palestinians Killed : By Gender and Governorate
- Table ( 3 ) Shows Palestinians Killed : By Type of weapon and Place of Injury
- Table ( 4 ) Shows Palestinians Killed : By Time of Killing and Place of Injury
- Table ( 5 ) Shows Palestinians Killed : By Type of Weapon Used and Age Group
- Table ( 6 ) Shows Palestinians Killed : By Refugee Status
- Table ( 7 ) Shows Palestinians Killed : By Educational Level
- Table ( 8 ) Shows Palestinians Killed : By School Enrollment
- Table ( 9 ) Shows Palestinians Killed : By Marital Status
- Table ( 10 ) Shows Palestinian Children ( Under 18 ) Killed : By Type of Weapon Used
- Table ( 11 ) Shows Palestinians Killed : By Cause of Death
- Table ( 12 ) Shows Palestinians Killed in Acts of Armed Resistance : By Type of Acts
- Table ( 13 ) Shows Palestinians Killed : By Location of the Murderer
- Table ( 14 ) Shows Palestinians Killed : By Place of Death
- Table ( 15 ) Shows Palestinians Killed : By Dependency Status and Governorate
- Table ( 16 ) Shows Palestinians Killed : By Restriction of Ambulances
- Table ( 17 ) Shows Retention of Palestinian Corpse
- Table ( 18 ) Shows Homes Damaged : By Extent of Damage and Governorate
- Table ( 19 ) Shows Homes Damaged : By Type of Damage and Governorate
- Table ( 20 ) Shows Homes Damaged : By Type of Area and Governorate
- Table ( 21 ) Shows People Who Used to Live in Homes Damaged : By Extent of Home Damage and Governorate
- Table ( 22 ) Shows Palestinians Who Used to Live in Homes Damaged : By Gender and Governorate
- Table ( 23 ) Shows Homes Damaged : By Type of Home

Table ( 24 ) Shows Homes Damaged : By Owners Type of Citizenship (Refugee / Non-Refugee)

Table ( 25 ) Shows Industrial Establishments Damaged : By Type of Damage and Type of Industry

Table ( 26 ) Shows IED : By Extent of Damage and Governorate

Table ( 27 ) Shows (IED) : By Type of Damage, Extent of Damage, and Governorate

Table ( 28 ) Shows Number of Workers in IED (Before and After Damage) : By Type of Industry

Table ( 29 ) Shows Commercial Establishments Damaged : by Type of Damage

Table ( 30 ) Shows CED : By Extent and Type of Damage

Table ( 31 ) Shows CED : By Extent of Damage and Governorate

Table ( 32 ) Shows Public Establishments Damaged : By Type of Establishment

Table ( 33 ) Shows PED : By Governorate and Extent of Damage

Table ( 34 ) Shows PED : By Type of Damage and Extent of Damage

Table ( 35 ) Shows Water - Wells Damaged : By Governorate

Table ( 36 ) Shows Number of People Dependent On Cultivable Land Now Damaged : By Governorate

Table ( 37 ) Shows Area CLD in Dunams : By Governorate

Table ( 38 ) Shows Damage Caused by Attacks Against the Agricultural Sector and Damage to Types of Agriculture

Table ( 39 ) Shows Direct Damage to the Agricultural Sector

Table ( 40 ) Shows Motor Vehicles Damaged : By Type of Motor Vehicle

Table ( 41 ) Shows MVD : By Extent of Damage and Governorate

Table ( 42 ) Shows Number of Days of Closure of Palestinian Crossing Points During the First Two Years of the Intifada

**Table ( 1 ) Shows Palestinians Killed ( Gaza Strip )  
: By Place of injury**

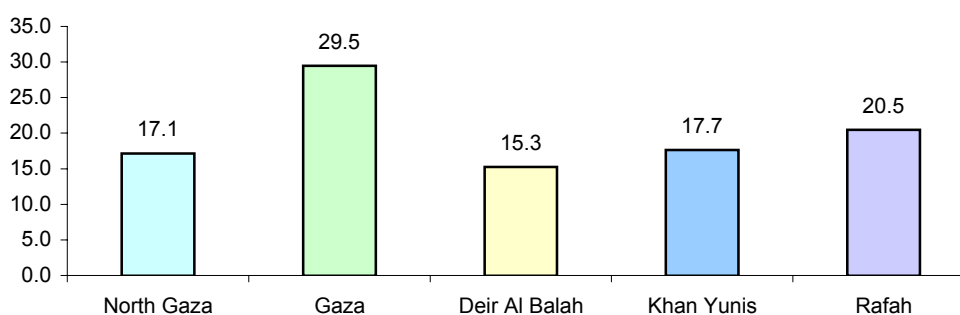
<b>Place of injury</b>	<b>Gaza Strip</b>	<b>West Bank</b>	<b>Israel</b>
<b>No.</b>	1059	68	4

**Table ( 2 ) Shows Palestinians Killed : By Gender and Governorate**

Gender	Governorate										Total	
	North Gaza		Gaza		Deir Al Balah		Khan Yunis		Rafah		No.	%
	No.	%	No.	%	No.	%	No.	%	No.	%		
Male	185	95.4	317	94.9	162	93.6	189	94.5	208	89.7	1061	93.6
Female	9	4.6	17	5.1	11	6.4	11	5.5	24	10.3	72	6.4
Total	194	100	334	100	173	100	200	100	232	100	1133	100

\*There are 3 people of other nationalities killed by IOF and were included with those killed in Rafah

**Distribution of Palestinians Killed : By Governorate**



**Table ( 3 ) Shows Palestinians Killed : By Type of weapon and Place of Injury**

Type of Weapon	Place of Injury on the Body										Total	
	Upper Parts		Lower Parts		Several Parts		Fragments		Other *		No.	%
	No.	%	No.	%	No.	%	No.	%	No.	%		
Bullets	420	85.9	25	78.1	265	54.2	4	4.8	10	25.6	724	63.9
Rockets	26	5.3	2	6.3	93	19.0	34	40.5	5	12.8	160	14.1
Bombs / Shells	31	6.3	4	12.5	79	16.2	10	11.9	4	10.3	128	11.3
Explosive Devices	5	1.0	0	0.0	39	8.0	35	41.7	4	10.3	83	7.3
Other *	7	1.4	1	3.1	13	2.7	1	1.2	4	10.3	26	2.3
Death at Checkpoints	0	0.0	0	0.0	0	0	0	0	12	30.8	12	1.1
Total	489	100	32	100	489	100	84	100	39	100	1133	100

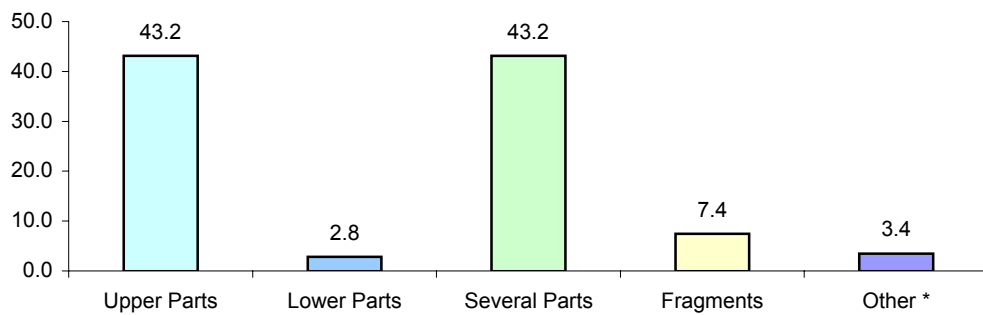
\* Other includes death from tear gas , rubber bullets , beating or knives

**Table ( 4 ) Shows Palestinians Killed : By Time of Killing and Place of Injury**

Time of Killing	Place of Injury on the Body										Total	
	Upper Parts		Lower Parts		Several Parts		Fragments		Other *		No.	%
	No.	%	No.	%	No.	%	No.	%	No.	%		
Immediately after Injury	312	63.8	15	46.9	427	87.3	82	97.6	25	64.1	861	76.0
Hours after Injury	96	19.6	11	34.4	34	7.0	1	1.2	6	15.4	148	13.1
Days after Injury	81	16.6	6	18.8	28	5.7	1	1.2	8	20.5	124	10.9
Total	489	100	32	100	489	100	84	100	39	100	1133	100

\* Other includes death from tear gas , rubber bullets , beating or knives

**Distribution of Palestinians Killed : By Place of Injury**

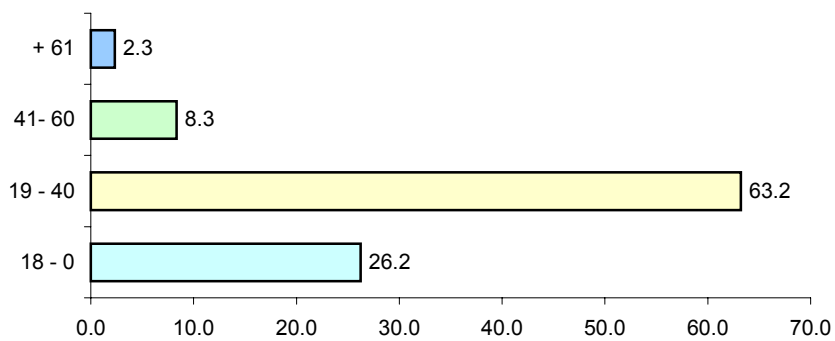


**Table ( 5 ) Shows Palestinians Killed : By Type of Weapon Used and Age Group**

Type of Weapon	Age Group								Total	
	18 - 0		40 - 19		60 - 41		+ 61		No.	%
	No.	%	No.	%	No.	%	No.	%		
Bullets	210	70.7	451	63.0	51	54.3	12	46.2	724	63.9
Rockets	26	8.8	111	15.5	18	19.1	5	19.2	160	14.1
Bombs / Shells	34	11.4	76	10.6	15	16.0	3	11.5	128	11.3
Explosive Devices	20	6.7	57	8.0	6	6.4	0	0.0	83	7.3
Other *	4	1.3	19	2.7	1	1.1	2	7.7	26	2.3
Death at Checkpoints	3	1.0	2	0.3	3	3.2	4	15.4	12	1.1
<b>Total</b>	<b>297</b>	<b>100</b>	<b>716</b>	<b>100</b>	<b>94</b>	<b>100</b>	<b>26</b>	<b>100</b>	<b>1133</b>	<b>100</b>

\* Other includes death from tear gas , rubber bullets , beating or knives

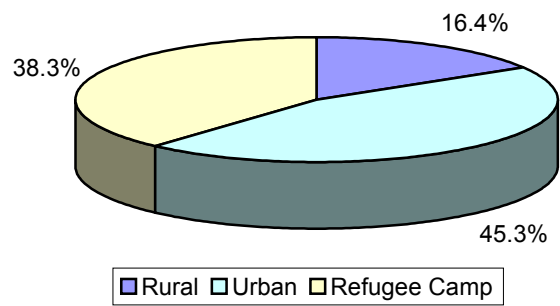
**Distribution of Palestinians Killed : By Age Group**



**Table ( 6 ) Shows Palestinians Killed : By Refugee Status**

Refugee Status	No.	Percentage
Refugee	788	69.5
Not Refugee	345	30.5
<b>Total</b>	<b>1133</b>	<b>100</b>

**Distribution of Palestinians Killed : By Type of Residence**



**Table ( 7 ) Shows Palestinians Killed : By Educational Level**

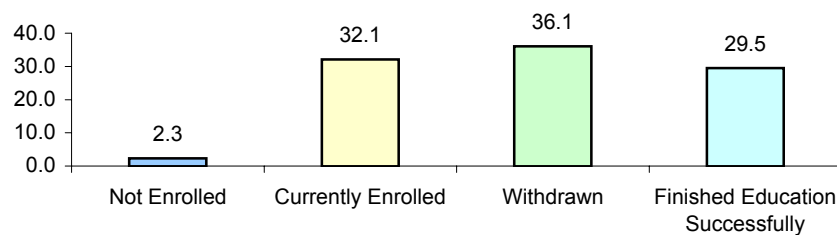
Educational Level	No.	Percentage
Illiterate	55	4.9
Able to Read and Write	64	5.7
Less than Secondary school	892	78.9
Middle Diploma	15	1.3
Bachelor Degree	103	9.1
Higher than Bachelor Degree	2	0.2
<b>Total</b>	<b>1131</b>	<b>100</b>

Families of 2 mutyrs refused to cooperate with the center

**Table ( 8 ) Shows Palestinians Killed : By School Enrollment**

Status when Dead	No.	Percentage
Not Enrolled	26	2.3
Currently Enrolled	363	32.1
Withdrawn	408	36.1
Finished Education Successfully	334	29.5
<b>Total</b>	<b>1131</b>	<b>100</b>

**Distribution of Palestians Killed : By School Enrollment**



**Table ( 9 ) Shows Palestinians Killed : By Marital Status**

Marital Status	No.	Percentage
Married	432	38.1
Single	684	60.4
Divorced	8	0.7
Widowed	9	0.8
<b>Total</b>	<b>1133</b>	<b>100</b>

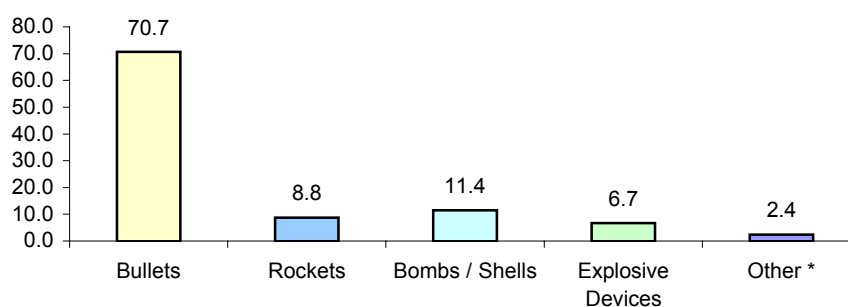


**Table ( 10 ) Shows Palestinian Children ( Under 18 ) Killed  
: By Type of Weapon Used**

Type of Weapons used	No.	Percentage
Bullets	210	70.7
Rockets	26	8.8
Bombs / Shells	34	11.4
Explosive Devices	20	6.7
Other *	7	2.4
<b>Total</b>	<b>297</b>	<b>100</b>

\* other includes death from tear gas, rubber bullets or death at checkpoints .

**Distribution Palestinian Children ( Under 18 ) Killed  
: By Type of Weapon Used**



**Table ( 11 ) Shows Palestinians Killed : By Cause of Death**

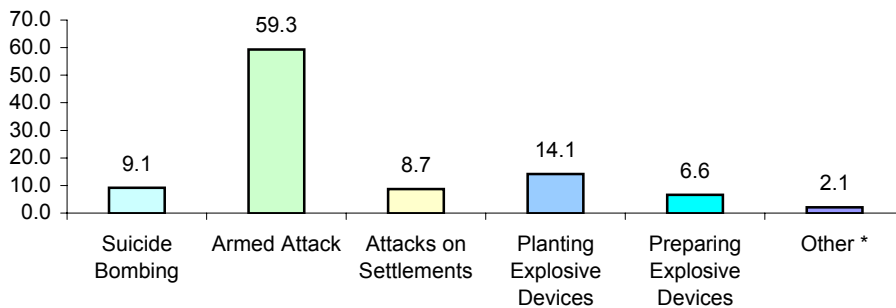
Cause of Death	No.	Percentage
Assassination	33	2.9
Accidentally Present at the Place of Assassination	67	5.9
Ambiguous Conditions Believed to by Assassination	17	1.5
Incursions into PA Areas	237	20.9
Confrontations with IDF	140	12.4
Bombardment / Shelling	58	5.1
Acts of Armed Resistance	241	21.3
At Home	79	7.0
Other	261	23.0
<b>Total</b>	<b>1133</b>	<b>100</b>

**Table ( 12 ) Shows Palestinians Killed in Acts of Armed Resistance : By Type of Acts**

Type of Resistance	No.	Percentage
Suicide Bombing	22	9.1
Armed Attack	143	59.3
Attacks on Settlements	21	8.7
Planting Explosive Devices	34	14.1
Preparing Explosive Devices	16	6.6
Other *	5	2.1
<b>Total</b>	<b>241</b>	<b>100</b>

\* Other includes those who were killed attacking IOF with knives or while monitoring clash areas

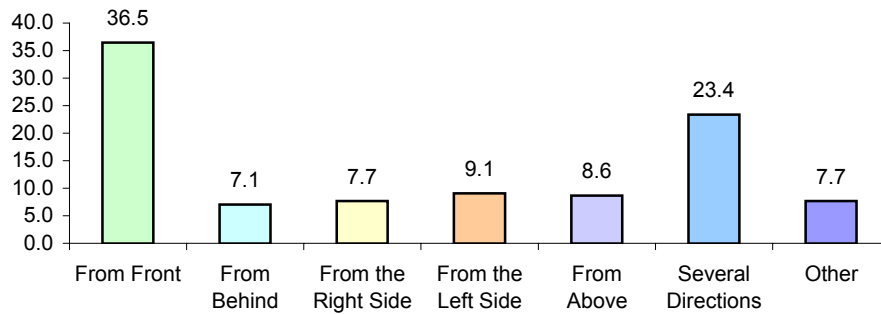
**Distribution of Palestinions Killed in Acts of Armed Resistance : By Type of Acts**



**Table ( 13 ) Shows Palestinians Killed : By Location of the Murderer**

Location of the Murderer	No.	Percentage
From Front	413	36.5
From Behind	80	7.1
From the Right Side	87	7.7
From the Left Side	103	9.1
From Above	98	8.6
Several Directions	265	23.4
Other	87	7.7
<b>Total</b>	<b>1133</b>	<b>100</b>

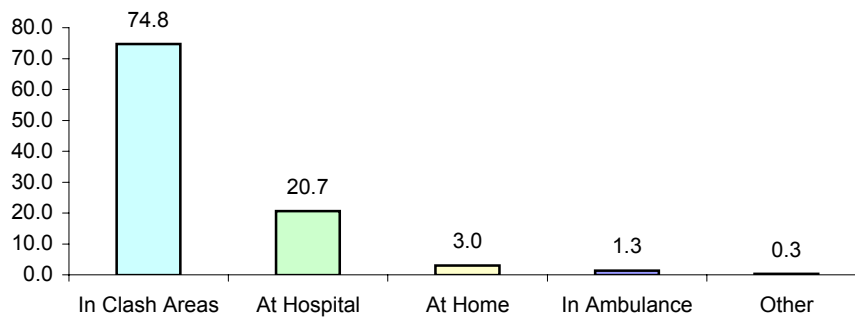
**Distribution Palestinians Killed : By Location of the Murderer**



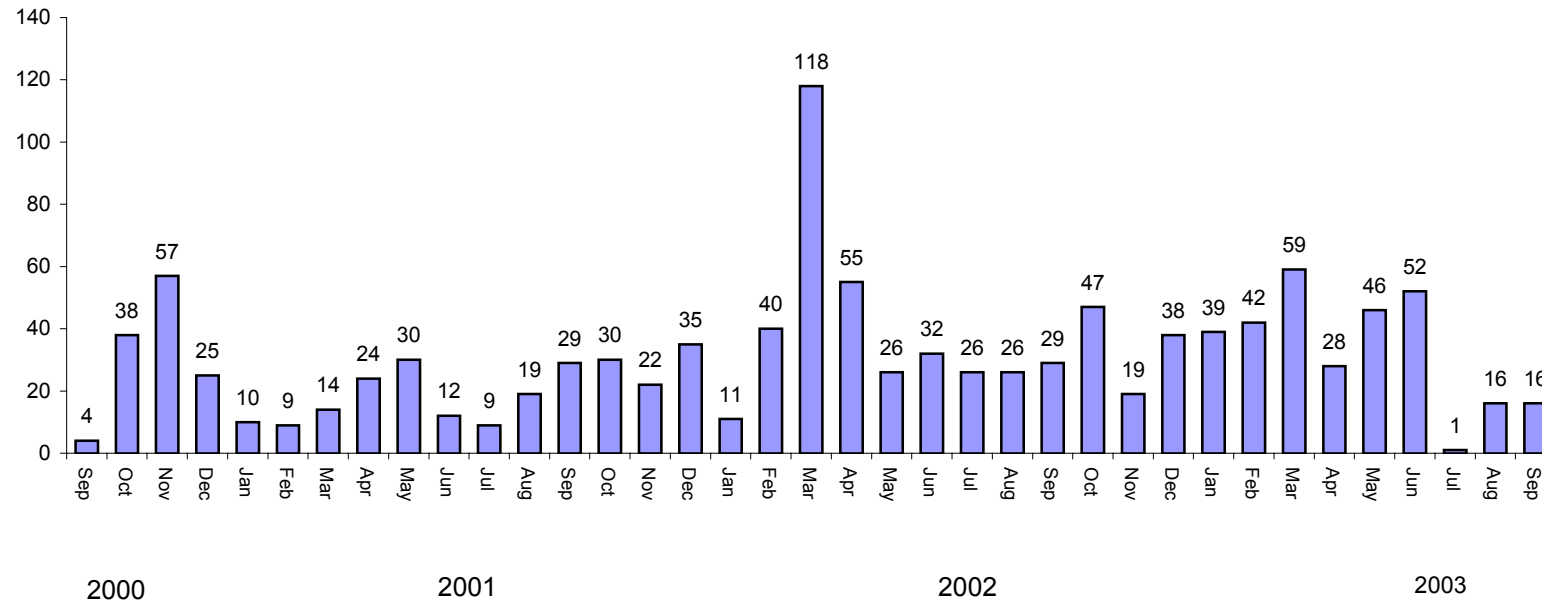
**Table ( 14 ) Shows Palestinians Killed : By Place of Death**

Place of Death	No.	Percentage
In Clash Areas	847	74.8
At Hospital	234	20.7
At Home	34	3.0
In Ambulance	15	1.3
Other	3	0.3
<b>Total</b>	<b>1133</b>	<b>100</b>

**Distribution Palestinians Killed : By Place of Death**



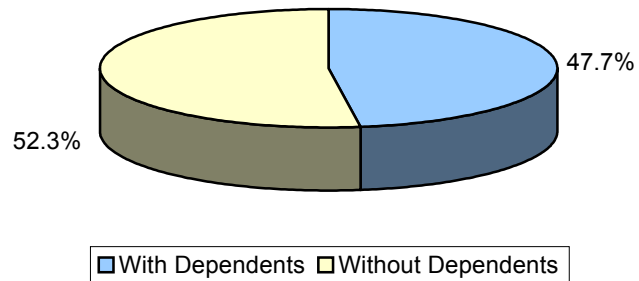
### Distribution of Palestinians Killed : By Date of Death



**Table ( 15 ) Shows Palestinians Killed : By Dependency Status and Governorate**

Dependency Status	Governorate					Total
	North Gaza	Gaza	Deir Al Balah	Khan Yunis	Rafah	
With Dependents	96	145	90	89	120	540
Without Dependents	98	189	83	111	112	593
Total	194	334	173	200	232	1133
No. of Dependents	575	940	598	541	786	3440

**Distribution Palestinians Killed : By Dependency Status**



**Table ( 16 ) Shows Palestinians Killed : By Restriction  
of Ambulances**

<b>Restriction of Ambulance</b>	<b>No.</b>	<b>Percentage</b>
Restricted	371	32.7
Not Restricted	762	67.3
<b>Total</b>	<b>1133</b>	<b>100</b>

**Table ( 17 ) Shows  
Retention of Palestinian Corpse**

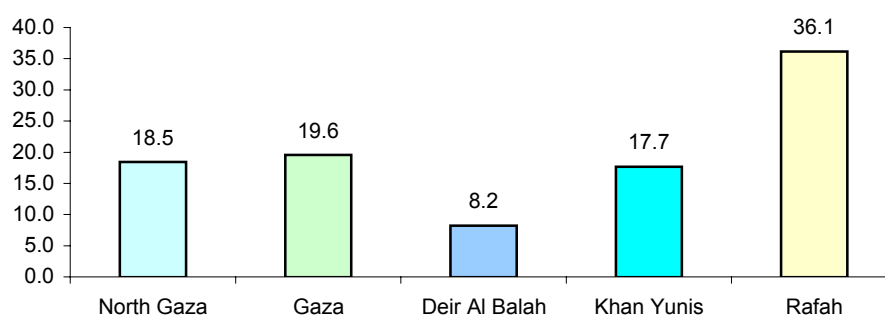
<b>Retention of Corpse</b>	<b>No.</b>	<b>Percentage</b>
Detained	220	19.4
Not Detained	913	80.6
<b>Total</b>	<b>1133</b>	<b>100</b>

**Table ( 18 ) Shows Homes Damaged : By Extent of Damage and Governorate**

Extent of Damage	Governorate										Total	
	North Gaza		Gaza		Deir Al Balah		Khan Yunis		Rafah			
	No.	%	No.	%	No.	%	No.	%	No.	%	No.	%
Complete	140	20	142	18.7	181	54.4	213	31.1	716	49.8	1392	35.4
Partial	575	80	616	81.3	152	45.6	471	68.9	723	50.2	2537	64.6
Total	715	100	758	100	333	100	684	100	1439	100	3929	100

\* A number of these homes were exposed to damage several times before they were completely destroyed. This report, however, counts them as one case.

**Distribution of Homes Damaged : By Governorate**

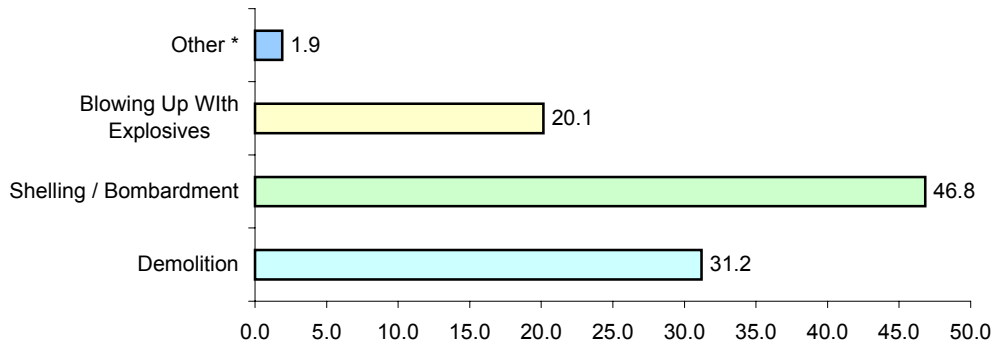


**Table ( 19 ) Shows Homes Damaged : By Type of Damage and Governorate**

Type of Damage	Governorate										Total	
	North Gaza		Gaza		Deir Al Balah		Khan Yunis		Rafah			
	No.	%	No.	%	No.	%	No.	%	No.	%	No.	%
Demolition	153	21.4	102	13.5	156	46.8	144	21.1	670	46.6	1225	31.2
Shelling / Bombardment	289	40.4	506	66.8	94	28.2	364	53.2	586	40.7	1839	46.8
Blowing Up With Explosives	256	35.8	144	19.0	68	20.4	168	24.6	155	10.8	791	20.1
Other *	17	2.4	6	0.8	15	4.5	8	1.2	28	1.9	74	1.9
Total	715	100	758	100	333	100	684	100	1439	100	3929	100

\* Other includes damages by incursion into civilian homes

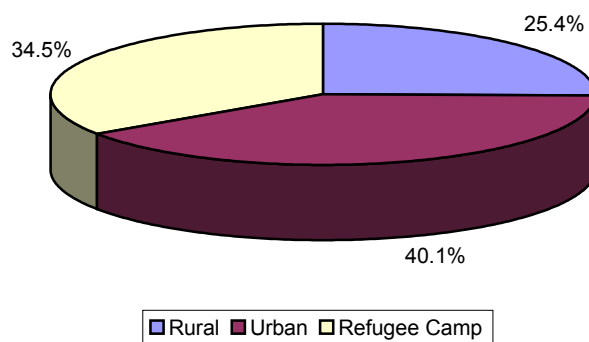
**Distribution of Homes Damaged : By Type of Damage**



**Table ( 20 ) Shows Homes Damaged : By Type of Area and Governorate**

Type of Area	Governorate										Total	
	North Gaza		Gaza		Deir Al Balah		Khan Yunis		Rafah			
	No.	%	No.	%	No.	%	No.	%	No.	%	No.	%
Rural	462	64.6	140	18.5	225	67.6	80	11.7	90	6.3	997	25.4
Urban	153	21.4	613	80.9	40	12.0	105	15.4	665	46.2	1576	40.1
Refugee Camp	100	14.0	5	0.7	68	20.4	499	73.0	684	47.5	1356	34.5
Total	715	100	758	100	333	100	684	100	1439	100	3929	100

**Distribution of Homes Damaged : By Type of Area**





**Table ( 21 ) Shows People Who Used to Live in Homes Damaged : By Extent of Home Damage and Governorate**

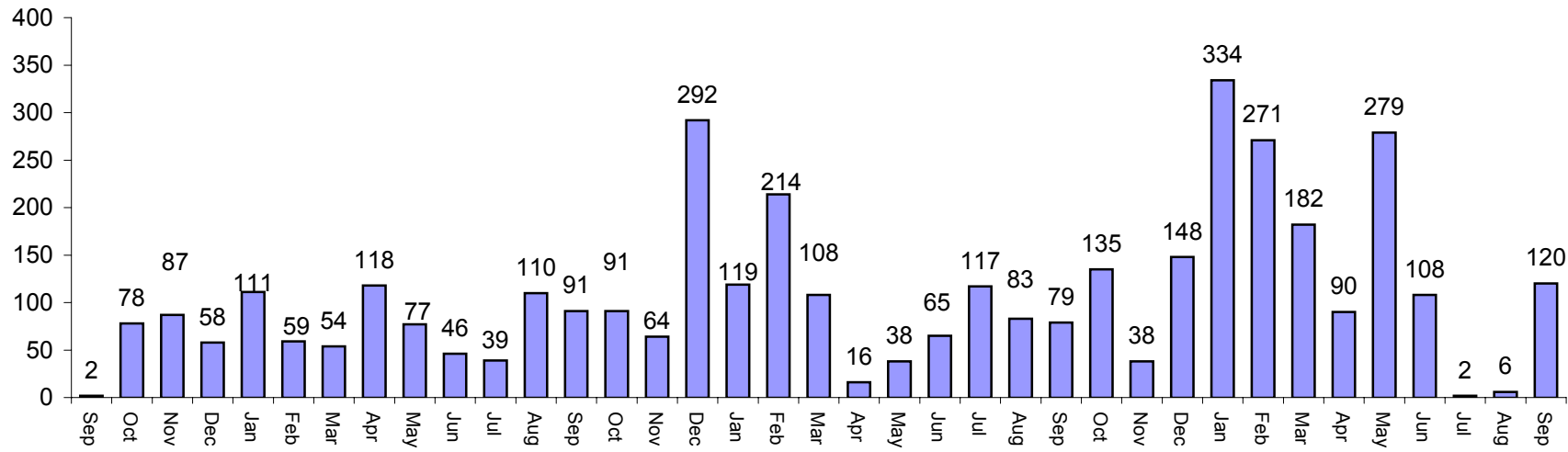
Governorate	Extent of Damage		Total
	Complete	Partial	
North Gaza	1283	5419	6702
Gaza	923	4931	5854
Deir Al Balah	1222	1232	2454
Khan Yunis	1657	3818	5475
Rafah	4605	5873	10478
<b>Total</b>	9690	21273	30963

\* 5453 families lost their residence due to IOF operations in the Gaza Strip

**Table ( 22 ) Shows Palestinians Who Used to Live in Homes Damaged : By Gender and Governorate**

Governorate	Gender		Total	No. of Children
	Male	Female		
North Gaza	3739	3651	7390	3899
Gaza	3148	3018	6166	3381
Deir Al Balah	1494	1458	2952	1511
Khan Yunis	2679	2717	5396	2770
Rafah	5702	5851	11553	6102
<b>Total</b>	16762	16695	33457	17663

### Number of Homes Damaged : By Date of Damage

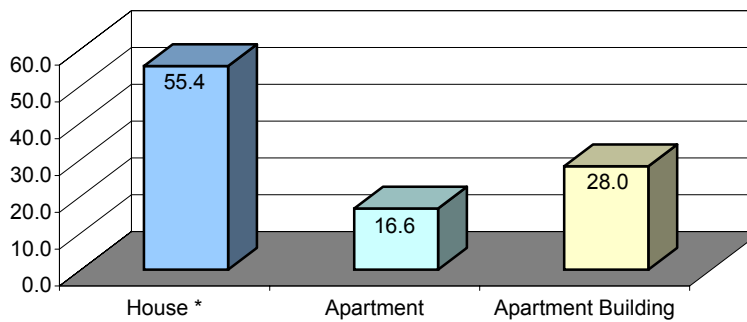


**Table ( 23 ) Shows Homes Damaged : By Type of Home**

Type of Home	No.	Percentage
House *	2175	55.4
Apartment	652	16.6
Apartment Building	1102	28.0
<b>Total</b>	<b>3929</b>	<b>100</b>

\* The item 'House' includes rural homes, UNRWA homes and ground floor homes.

**Distribution of Homes Damaged : By Type of Home**



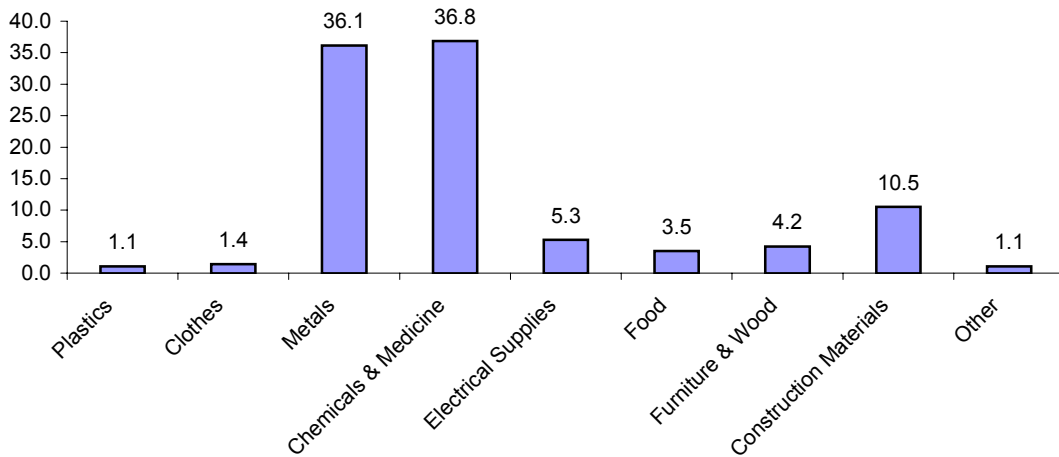
**Table ( 24 ) Shows Homes Damaged : By Owners Type of Citizenship (Refugee / Non-Refugee)**

Type of Citizenship	No. of Homes	Percentage
Refugee	2490	63.4
Non - Refugee	1439	36.6
<b>Total</b>	<b>3929</b>	<b>100</b>

**Table ( 25 ) Shows Industrial Establishments Damaged : By Type of Damage and Type of Industry**

Type of Industry	Type of Damage								Total	
	Demolition		Shelling / Bombardment		Blowing Up With Explosives		Other			
	No.	%	No.	%	No.	%	No.	%	No.	%
Plastics	1	33.3	1	33.3	1	33.3	0	0	3	100
Clothes	0	0	3	75.0	0	0	1	25.0	4	100
Metals	25	24.3	28	27.2	49	47.6	1	1.0	103	100
Chemicals & Medicine	3	2.9	1	1.0	101	96.2	0	0	105	100
Electrical Supplies	2	13.3	9	60.0	4	26.7	0	0	15	100
Food	2	20	6	60.0	1	10.0	1	10.0	10	100
Furniture & Wood	2	16.7	5	41.7	5	41.7	0	0	12	100
Construction Materials	21	70.0	9	30.0	0	0	0	0	30	100
Other	0	0	0	0	3	100.0	0	0	3	100
<b>Total</b>	<b>56</b>	<b>19.6</b>	<b>62</b>	<b>21.8</b>	<b>164</b>	<b>57.5</b>	<b>3</b>	<b>1.1</b>	<b>285</b>	<b>100</b>

**Distribution of IED : By Type of Industry**

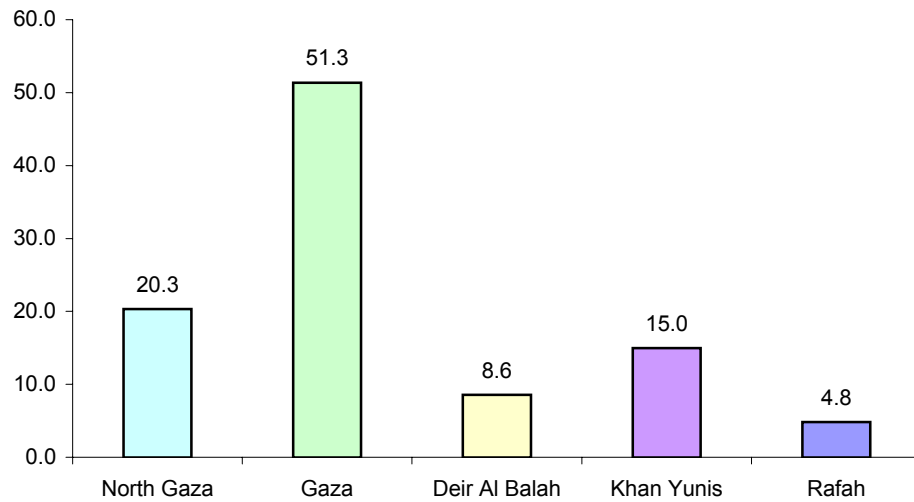


**Table ( 26 ) Shows IED : By Exent of Damage and Governorate**

Extent of Damage	Governorate										Total	
	North Gaza		Gaza		Deir Al Balah		Khan Yunis		Rafah			
	No.	%	No.	%	No.	%	No.	%	No.	%	No.	%
Complete	14	37	54	56.3	8	50.0	15	53.6	7	77.8	98	54.0
Partial	24	63	42	43.8	8	50.0	13	46.4	2	22.2	89	46.0
Total	38	100	96	100	16	100	28	100	9	100	187	100

\*Numerous IED were attacked by IOF several times .

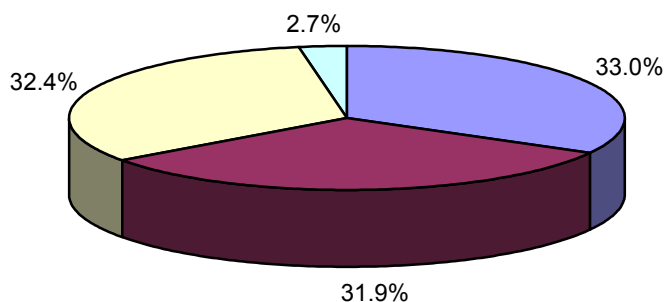
**Distribution of IED : By Governorate**



**Table ( 27 ) Shows (IED) : By Type of Damage, Extent of Damage, and Governorate**

Type and Extent of Damage	Governorate										Total	
	North Gaza		Gaza		Deir Al Balah		Khan Yunis		Rafah		No.	%
	No.	%	No.	%	No.	%	No.	%	No.	%		
<b>Complete</b>												
Demolition	3	23.1	22	61.1	3	10	1	25.0	5	100	34	55.7
Shelling / Bombardment	7	43.8	7	38.9	2	25	8	57.1	1	33.3	25	42.4
Blowing Up With Explosives	3	75.0	25	61.0	3	75	6	60.0	1	100	38	63.3
Other	0	0.0	0	0.0	0	0.0	0	0.0	0	0.0	0	0.0
<b>Partial</b>												
Demolition	10	76.9	14	38.9	0	0.0	3	75.0	0	0.0	27	44.3
Shelling / Bombardment	9	56.3	11	61.1	6	75	6	42.9	2	67	34	57.6
Blowing Up With Explosives	1	25.0	16	39.0	1	25	4	40.0	0	0.0	22	36.7
Other	4	100	1	100	0	0.0	0	100	0	0.0	5	100
<b>Total</b>												
Demolition	13	100	36	100	3	100	4	100	5	100	61	100
Shelling / Bombardment	16	100	18	100	8	100	14	100	3	100	59	100
Blowing Up With Explosives	4	100	41	100	4	100	10	100	1	100	60	100
Other	4	100	1	100	0	0.0	0	100	0	100	5	100

**Distribution of IED : By Type of Damage**



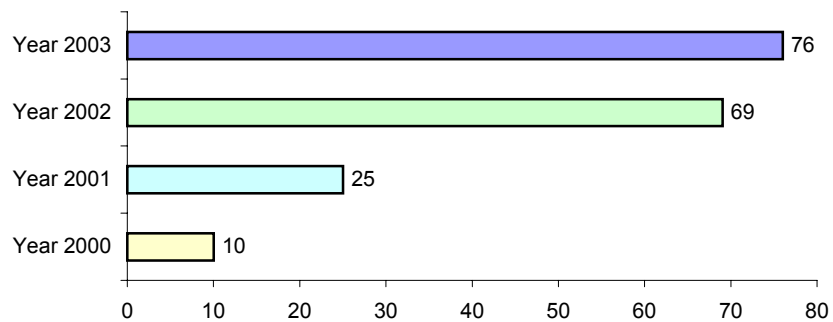
■ Demolition ■ Shelling / Bombardment ■ Blowing With Explosives ■ Other \*

**Table ( 28 ) Shows Number of Workers in IED (Before and After Damage)**

**: By Type of Industry**

Type of Industry	No. of Workers Before Damage	No. of Workers After Damage	Unemployed Workers	Percentage of Increased Unemployment
Plastics	83	6	77	92.8
Clothes	1852	55	1797	97.0
Metals	590	166	424	71.9
Chemicals & Medicine	159	10	149	93.7
Electrical Supplies	159	14	145	91
Food	160	37	123	76.9
Furniture & Wood	184	27	157	85.3
Construction Materials	357	38	319	89.4
Other	0	0	0	0
Total	3544	353	3191	90.0

**Number of IED : By Date of Damage**

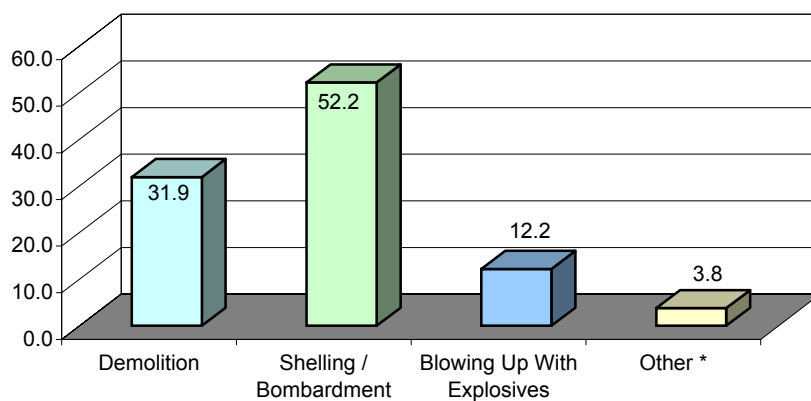


**Table ( 29 ) Shows Commercial Establishments Damaged  
: By Type of Damage**

Type of Damage	No.	Percentage
Demolition	110	31.9
Shelling / Bombardment	180	52.2
Blowing Up With Explosives	42	12.2
Other *	13	3.8
<b>Total</b>	<b>345</b>	<b>100</b>

\* The item 'other' includes breaking into establishment and destroying its contents .

**Distribution of CED : By Type of Damage**

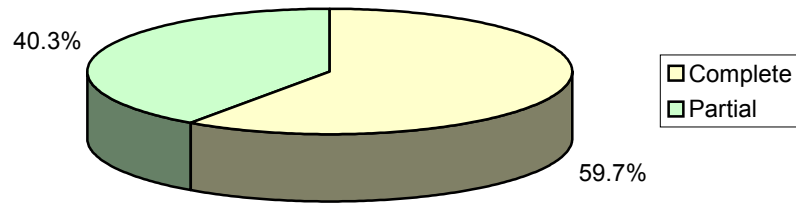




**Table ( 30 ) Shows CED : By Extent and Type of Damage**

Extent of Damage	Type of Damage								Total	
	Demolition		Shelling / Bombardment		Blowing Up With Explosives		Other			
	No.	%	No.	%	No.	%	No.	%	No.	%
Complete	107	97.3	82	45.6	16	38.1	1	7.7	206	59.7
Partial	3	2.7	98	54.4	26	61.9	12	92.3	139	40.3
Total	110	100.0	180	100.0	42	100.0	13	100.0	345	100.0

**Distribution of CED : By Extent of Damage**

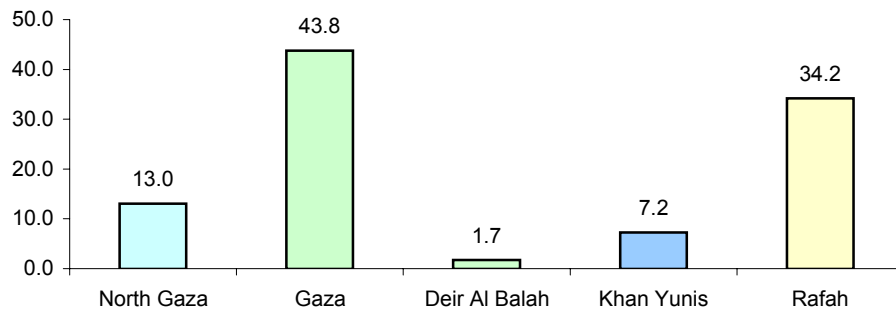


**Table ( 31 ) Shows CED : By Extent of Damage and Governorate**

Extent of Damage	Governorate										Total	
	North Gaza		Gaza		Deir Al Balah		Khan Yunis		Rafah			
	No.	%	No.	%	No.	%	No.	%	No.	%	No.	%
Complete	11	24.4	80	53.0	3	0.0	15	60	97	82.2	206	59.7
Partial	34	75.6	71	47.0	3	100.0	10	40	21	17.8	139	40.3
Total	45	100	151	100	6	100	25	100	118	100	345	100

\* Numerous CED were attacked by IOF several times

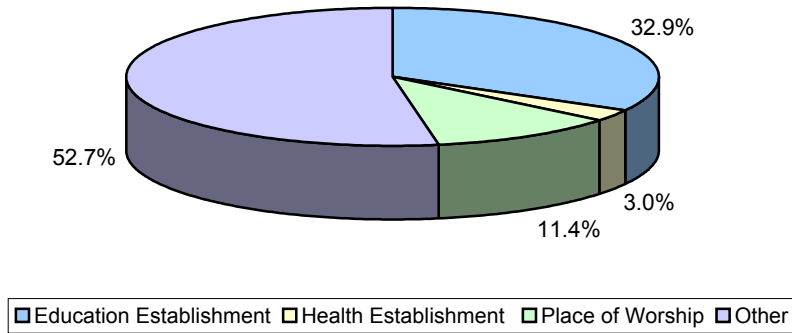
**Distribution of CED : By Governorate**



**Table ( 32 ) Shows Public Establishments Damaged : By Type of Establishment**

Type of Establishment	No.	Percentage
Education Establishment	55	32.9
Health Establishment	5	3.0
Place of Worship	19	11.4
Other	88	52.7
<b>Total</b>	<b>167</b>	<b>100</b>

**Distribution of PED : By Type of Establishment**



**Table ( 33 ) Shows PED : By Governorate and Extent of Damage**

Governorate	Extent of Damage		Total
	Complete	Partial	
North Gaza	6	40	46
Gaza	2	42	44
Deir Al Balah	2	10	12
Khan Yunis	10	21	31
Rafah	8	33	41
<b>Total</b>	28	146	174

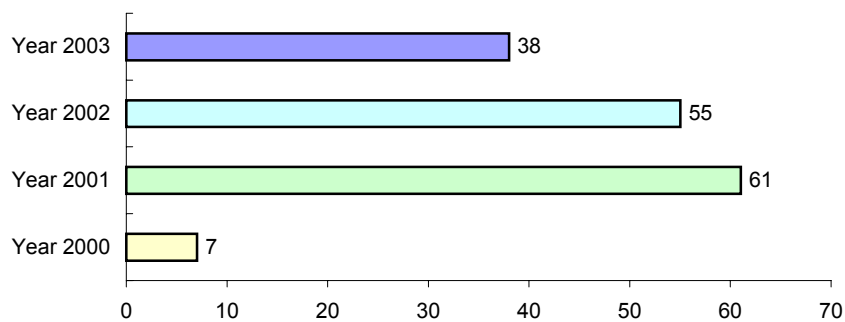
\* Numerous PED were attacked by IOF several times

**Table ( 34 ) Shows PED : By Type of Damage and Extent of Damage**

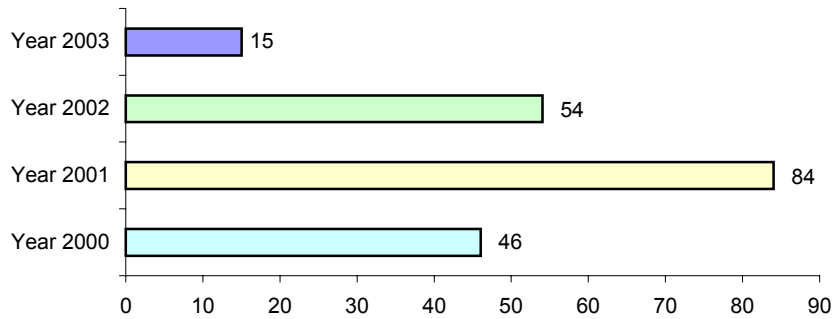
Type of Damage	Extent of Damage		Total
	Complete	Partial	
Demolition	10	12	22
Shelling / Bombardment	2	109	111
Blowing Up With Explosives	4	7	11
Other *	2	18	20
<b>Total</b>	18	146	164

\* The item 'other' includes IOF breaking into, occupying, and destroying contents of the establishments .

**Number of PED : By Date of Damage**



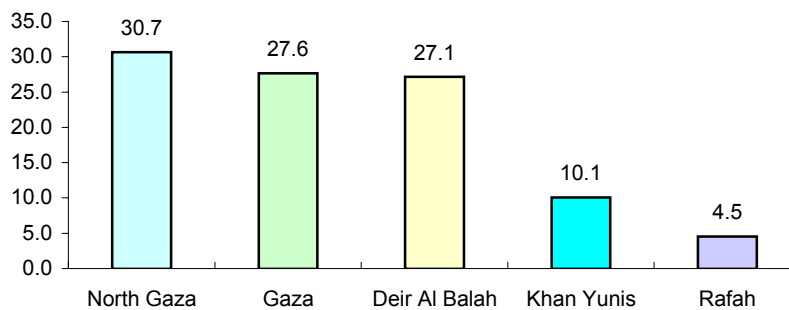
### Water - Wells Damaged : By Date of Damage



**Table ( 35 ) Shows Water - Wells Damaged : By Governorate**

Governorate	No.	Percentage
North Gaza	61	30.7
Gaza	55	27.6
Deir Al Balah	54	27.1
Khan Yunis	20	10.1
Rafah	9	4.5
Total	199	100

### Distribution of Water - Wells Damaged : By Governorate



**Table ( 36 ) Shows Number of People Dependent On  
Cultivable Land Now Damaged : By Governorate**

<b>Governorate</b>	<b>Number</b>
North Gaza	16392
Gaza	11169
Deir Al Balah	7433
Khan Yunis	5777
Rafah	6783
Total	47554

\* In addition to this number, four families dependent on this land are currently out of the country.

**Table ( 37 ) Shows Area CLD in Dunams\* : By Governorate**

<b>Governorate</b>	<b>Area in Dunams</b>	<b>Percentage of Damaged Land</b>
North Gaza	10158.823	43.9
Gaza	3542.827	15.3
Deir Al Balah	4033.56	17.4
Khan Yunis	3129.37	13.5
Rafah	2298.23	9.9
Total	23162.810	100.0

\* One dunam corresponds to 1,000 square meters in the international system

**Table ( 38 ) Shows Damage Caused by Attacks Against the Agricultural Sector and Damage to Types of Agriculture**

Kinds of Agricultural	Type	Governorates					Total Losses in Gaza Governorates
		North Gaza	Gaza	Deir Al Balah	Khan Yunis	Rafah	
Trees (Producer/Non-Producer)	No.	351037	86428	71939	34329	80309	624042
Other Agricultural	Dunam	1915.11	429.65	1550.79	1243.96	832.55	5972.06



**Table ( 39 ) Shows Direct Damage to the Agricultural Sector**

<b>No</b>	<b>Kind of Losses</b>	<b>Type</b>	<b>Total Losses in Gaza Governorates</b>
1	Demolition of Agricultural Stores	No.	559
2	Death of Livestock	No.	1445
3	Ruining Bee Hives	No.	3202
4	Destruction of Water-Wells	No.	199
5	Demolition of Farmers' Homes	No.	175
6	Destruction of Irrigation Pools and Reservoirs	No.	546
7	Ruining Chemicals Pumps	No.	845
8	Ruining of Water Pumps	No.	713
9	Ruining Greenhouses	Dunam	693.271
10	Ruining Ground Green Houses	Dunam	255.86

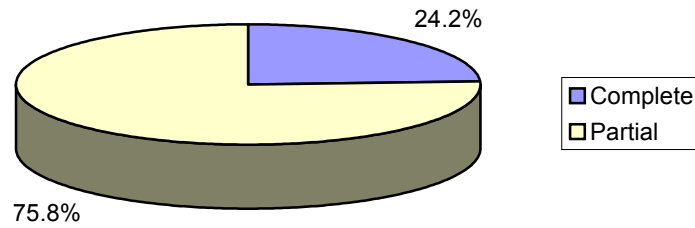
**Tble ( 40 ) Shows Motor Vehicles Damaged : By  
Type of Motor Vehicle**

<b>Type of Motor Vehicle</b>	<b>No.</b>	<b>Percentage</b>
Private	275	73.9
Public Transportation	34	9.1
Commercial Transportation	34	9.1
Other	29	7.8
Total	372	100

**Table ( 41 ) Shows MVD : By Extent of Damage and Governorate**

Extent of Damage	Governorate										Total	
	North Gaza		Gaza		Deir Al Balah		Khan Yunis		Rafah		No.	%
	No.	%	No.	%	No.	%	No.	%	No.	%		
Complete	13	16.5	33	22.6	14	32.6	19	24.1	11	44.0	90	24.2
Partial	66	83.5	113	77.4	29	67.4	60	75.9	14	56.0	282	75.8
Total	79	100	146	100	43	100	79	100	25	100	372	100

**Distribution of MVD : By Extent of Damage**



**Table ( 42 ) Shows Number of Days of Closure of Palestinian Crossing Points During the First Two Years of the Intifada**

<b>No</b>	<b>Crossing Points Name</b>	<b>Closing Days</b>
1	Rafah / Al - Awda Crossing	169
2	Sofa Crossing	566
3	Al - Mintar / Karni Crossing	120
4	Beit Hanun / Eriz Crossing	504
5	Gaza International Airport	1035